

ULI To Explore Revitalization at Cleveland Circle

Cleveland Circle Technical Assistance Panel (TAP) - A ULI Advisory Service
Public Presentation - October 28, 6 - 7:30 pm, Brookline Town Hall

Objective of ULI Boston's TAP Program

ULI Boston's TAP program provides expert, multidisciplinary advice to public agencies and non-profit organizations facing complex land use and real estate issues. Drawing from its extensive membership base, ULI Boston conducts panels to offer objective and responsible advice.

The TAP is sponsored by the MBTA and will explore transit oriented development (TOD) opportunities at Cleveland Circle. ULI's long track record of advancing smart growth and TOD provides a rich knowledge base for advisory services panels on this issue.

The study area is located in both Boston and Brookline and consists of:

1. An active Green Line rail yard and maintenance facility
2. The "C" Green Line terminus station
3. Reservoir Station on the "D" Green Line and associated bus stop/drop off area
4. Cleveland Circle intersection

To analyze such a complex site, the Boston District Council has drawn on its local membership to assemble a team with substantial expertise in development, architecture, and master planning, market feasibility, construction, transportation engineering and law. Chief among planning changes the TAP will address is how to balance the development potential created by the site's urban location and proximity to public transit with the need to maintain the efficient operation of the existing transit infrastructure.

This TAP is scheduled to take place in two sessions.

Session 1: Friday, October 16

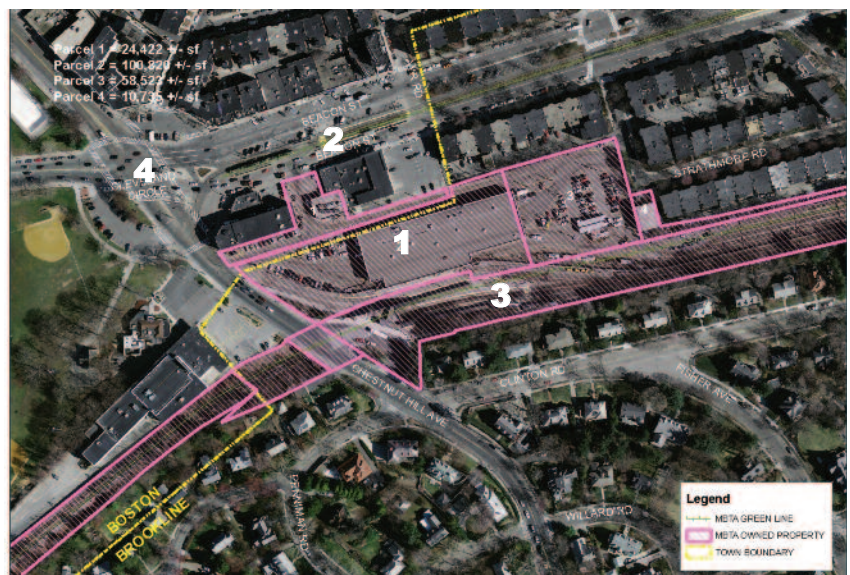
Site Tour and Stakeholder Interviews
Waterworks Museum, 2450 Beacon Street,
Chestnut Hill

Session 2: Wednesday, October 28

Planning charette and Public Presentation of
TAP proposals
Brookline Town Hall, 333 Washington St.
Public Presentation 6 - 7:30 pm.

Special thanks the Town of Brookline and The Waterworks Museum for their assistance and for hosting this event.

For additional information on the Cleveland Circle TAP please contact Michelle Landers at ULI Boston, 617-239-0564 or mlanders@uli.org.



**RESERVOIR STATION AREA
BOSTON & BROOKLINE, MA**
For planning purposes only.
All locations are approximate.

0 100 200 400 Feet

